

YACHTING
EXCELLENCE
SINCE 1974

solaris*POWER*
BUILT FOR MARINERS



S
O
L
A
R
I
S

P
O
W
E
R

SOLARIS POWER

THE QUALITY OF SOLARIS SAILING
YACHTS NOW IN POWER BOATS



FOR OVER 45 YEARS SOLARIS HAS BUILT LARGE
HIGH QUALITY YACHTS THAT SAIL IN ALL THE SEAS
AND OCEANS OF THE WORLD

SOLARIS: SINCE 1974
QUALITY, SEAWORTHINESS
AND ELEGANCE



The boatyard's reputation, founded in Aquileia 45 years ago, is better known among German, Swiss and Austrian yachtsmen than it is in Italy.

Right from the beginning, the company's philosophy has been the building seaworthy, solid and secure sailing boats to the highest quality standards, capable of challenging the prestigious Scandinavian and Dutch yacht builders. Fittingly, Solaris claims that our yachts are also: "Built for mariners".

Its volume and revenues increased fivefold in just a few years

and today it is the European leader in the category of top-class sailing boats from 50' to 110'. There are not many boatyards left today, who can combine leading-edge technology with traditional craftsmanship of detail and finishing as Solaris Yachts does.

Since 2008 Solaris also operates a production unit dedicated to motoryachts from 44' to 100', including five 90' luxury displacement motoryachts for an internationally renowned brand.

This facility is now the builder of the new Solaris Power range, to the same exacting quality standards of Solaris sailboats.

TRADITIONAL CRAFTSMANSHIP

There are not many boatyards left today, that can combine leading-edge technology with traditional craftsmanship of details and finishing as Solaris Yachts does.



THE LOBSTER BOAT HERITAGE

Solaris was among the first in Europe to build a lobster boat, the 47-foot Express Cruiser, by Bruce King, designer of the famous American Hinckley line.



THE GREAT SEAGOING CAPABILITIES OF SOLARIS POWER

SMOOTH SAILING THROUGH THE WAVES AND A DRY DECK IN CHOPPY SEAS

The sharp shape of the bow and the pronounced flare, softens the passage through the waves and keeps the deck dry.

GREAT STABILITY WHILE CRUISING AND AT ANCHOR

The hull shape guarantees great stability and comfort when cruising and at anchor, without the need for stabilizers.



LOW FUEL CONSUMPTION RESULTING IN EXCELLENT RANGE

The advanced studies on the shapes of the hull, ensure low fuel consumption, resulting in excellent range and reduced CO₂ emissions. One example, the 48 Open at a cruising speed of 26 knots only needs 4.8 litres per mile.

EFFICIENT CRUISING BOTH IN DISPLACEMENT AND IN PLANING MODE

Unlike ordinary boats with planing hulls, Solaris Power are capable to cruise steadily and without roll even in displacement mode from 10 to 14 knots.



THE LATEST PROPULSION TECHNOLOGY

Solaris Power yachts feature cutting-edge propulsion working in synergy with the shape of the hull. This is the outcome of intense collaboration between Victory Design and Volvo Penta. Since 2005 Brunello Acampora

has been studying shapes that are optimised for the IPS, including 'azimuth pods' for planing hulls; having found they generate huge performance improvements. Moreover, the compactness of the propulsion apparatus

yields a noticeable increase of living space: the interiors of these boats compare favourably with much bigger yachts, and make the tender easy to stow, launch and haul.



EASY DOCKING THANKS TO THE JOYSTICK

Docking manoeuvres are simplified thanks to the joystick and the azimuth pods, even with a single person at the controls.



LOW NOISE LEVEL AND ZERO VIBRATIONS

The absence of the rotating masses of the shaft line and the engine exhausts in the propeller pods ensure absence of vibrations and low noise.

SPACIOUS AND WELL VENTILATED ENGINE ROOM

Offering easy access to the engine itself and to the other systems.



INNOVATIONS FOR MORE ON-BOARD COMFORT

WALKAROUND

The decks of all models include lateral walkways that afford easy and safe movement from bow to stern.



FOLD-OUT BULWARKS

These can be opened for enhanced enjoyment of the cockpit, increasing its surface by 20%.



VERY LARGE SUNBEDS

All Solaris Power have the bow sundeck. Open models also offer an aft sundeck.



HYDRAULIC GANGWAY

The hydraulic gangway turns into a comfortable swim ladder.



TENDER GARAGE

Under the aft opening sundeck there is a large garage that can be used for the tender and various water toys.



LAYOUT IN MULTIPLE VERSIONS

The internal and external layouts are available in several versions to suit the tastes and needs of owners.





SOLARIS POWER RANGE

44

OPEN

P. 10

48

OPEN

P. 16

LOBSTER

P. 26

FLYBRIDGE

P. 34

57

LOBSTER

P. 42

FLYBRIDGE

P. 54

58

OPEN

P. 56

70

FLYBRIDGE

P. 60

44

WORLD PREMIERE
NOVEMBER 2020

ALL THE SEAWORTHY FEATURES OF THE
SOLARIS POWER RANGE WITH THE LARGEST
LIVING AREA IN THE CATEGORY.
NEVER BEFORE HAS A 44-FOOTER
OFFERED SO MUCH.

O
P
E
N

- 10 -

44





44





44 OPEN

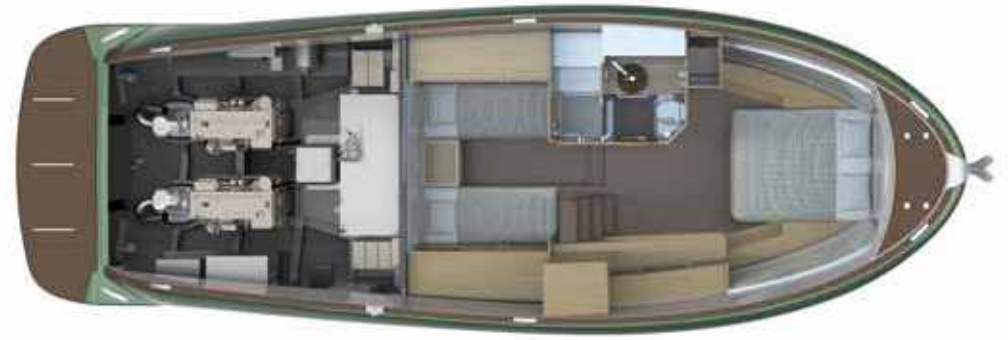
TECHNICAL SPECIFICATIONS

MAIN DECK



LOWER DECK

Version A



LOWER DECK

Version B



LENGTH OVERALL	13,47 m / 44'18" ft
WATER LINE LENGTH	11,95 m / 39'20" ft
BEAM	4,35 m / 14'27" ft
DRAFT	1,03 m / 3'37" ft
APPROX. LIGHT DISPLACEMENT	11.500 kg / 25.353 Lbs
APPROX. LOAD DISPLACEMENT	14.000 kg / 30.864 Lbs
FUEL CAPACITY	1.200 L / 317 US gal
WATER CAPACITY	330 L / 87 US gal
ENGINES	2 x Volvo Penta D6 IPS 500 272 kW / 370 hp 3500 rpm 2 x Volvo Penta D6 IPS 600 320 kW / 435 hp 3500 rpm 2 x Volvo Penta D6 IPS 650 353 kW / 480 hp 3800 rpm
MAX SPEED	33 kn - IPS 500 / 36,5 kn - IPS 600
CRUISING SPEED	22 kn - IPS 500 / 25 kn - IPS 600
CABINS	2
BATHROOMS	1
MAX PERSONS CAPACITY	12
DESIGN	Brunello Acampora / Victory Design Solaris Power Design Team

48

EUROPEAN YACHT OF THE YEAR 2020

FLARED BOW FOR SMOOTH SAILING
THROUGH THE WAVES. GREAT STABILITY
WHILE CRUISING AND AT ANCHOR.
THE ONLY OPEN BOAT WITH A TRUE
WALKAROUND DECK, FEATURING THE SAME
CABIN SPACE OF A CONVENTIONAL CABIN
CRUISER.

O
P
E
N









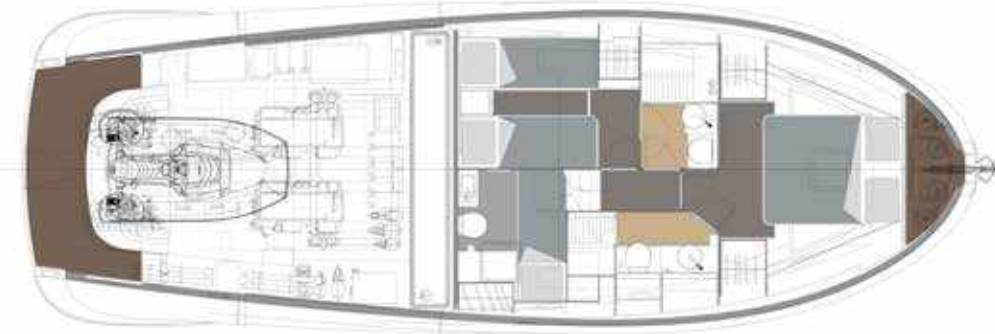


MAIN DECK



LOWER DECK

Version A



LOWER DECK

Version B



LOWER DECK

Version C



48 OPEN

TECHNICAL SPECIFICATIONS

LENGTH OVERALL	14,86 m / 48'74" ft
WATER LINE LENGTH	13,40 m / 43'95" ft
BEAM	4,87 m / 15'97" ft
DRAFT	1,05 m / 3'44" ft
APPROX. LIGHT DISPLACEMENT	14.000 kg / 30 864 Lbs
APPROX. LOAD DISPLACEMENT	16.800 kg / 37037 Lbs
FUEL CAPACITY	1.500 L / 396 US gal
WATER CAPACITY	430 L / 114 US gal
ENGINES	2 x Volvo Penta D6 IPS 600 320 kW / 435 hp 3500 rpm 2 x Volvo Penta D6 IPS 650 353 kW / 480 hp 3800 rpm
MAX SPEED	34 kn 36 kn
CRUISING SPEED	23 kn 26 kn
CABINS	1/2
BATHROOMS	1 + 1
MAX PERSONS CAPACITY	12
DESIGN	Brunello Acampora / Victory Design Cav. Norberto Ferretti Solaris Power Design Team

48

SOLARIS POWER 48 LOBSTER

A NEW TAKE ON THE TRADITIONAL
LOBSTER BOAT, WITH ALL ITS FEATURES
OF SEAWORTHINESS, FUNCTIONALITY AND
SAFETY.

L
O
B
S
T
E
R

48









MAIN DECK

Version A



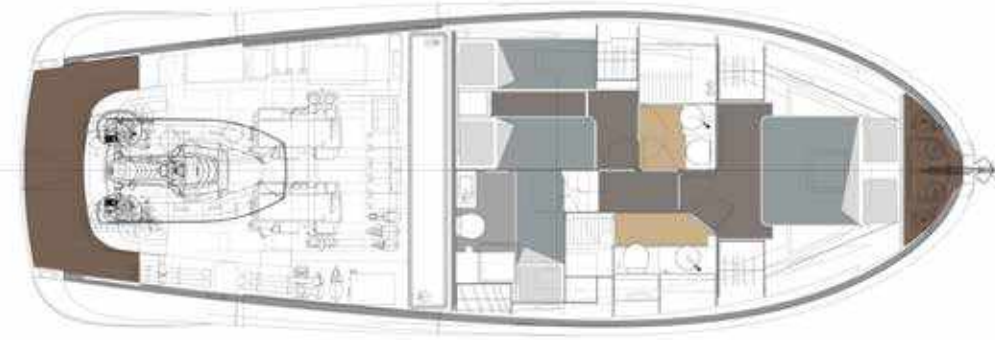
MAIN DECK

Version B



LOWER DECK

Version A



LOWER DECK

Version B



LOWER DECK

Version C



48 LOBSTER

TECHNICAL SPECIFICATIONS

LENGTH OVERALL	14,86 m / 48'74" ft
WATER LINE LENGTH	13,40 m / 43'95" ft
BEAM	4,87 m / 15'97" ft
DRAFT	1,05 m / 3'44" ft
APPROX. LIGHT DISPLACEMENT	14.750 kg / 32518 Lbs
APPROX. LOAD DISPLACEMENT	17.550 kg / 38691 Lbs
FUEL CAPACITY	1.500 L / 396 US gal
WATER CAPACITY	430 L / 114 US gal
ENGINES	2 x Volvo Penta D6 IPS 600 320 kW / 435 hp 3500 rpm 2 x Volvo Penta D6 IPS 650 353 kW / 480 hp 3800 rpm
MAX SPEED	28 kn - IPS 600 / 32 kn - IPS 650
CRUISING SPEED	20 kn - IPS 600 / 24 kn - IPS 650
CABINS	1/2
BATHROOMS	1 + 1
MAX PERSONS CAPACITY	12
DESIGN	Brunello Acampora / Victory Design Cav. Norberto Ferretti Solaris Power Design Team

48

SOLARIS POWER 48 FLYBRIDGE

THE VERSATILITY OF THE FLYBRIDGE
COMBINED WITH THE MARINE
PERFORMANCES OF THE SOLARIS POWER
LOBSTER.

F
L
Y
B
R
I
D
G
E

48









48 FLYBRIDGE

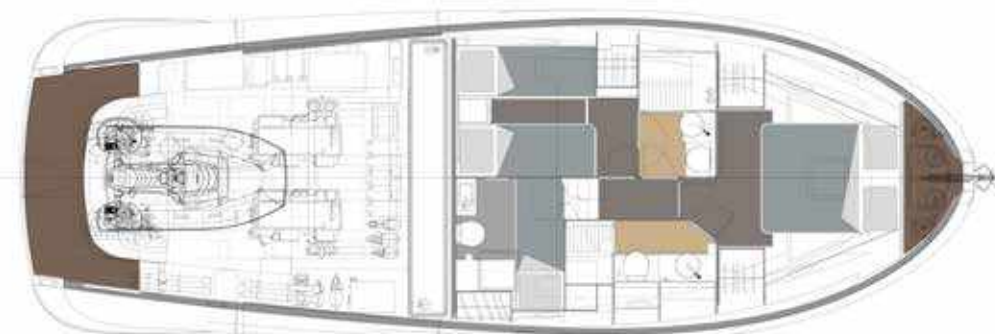
TECHNICAL SPECIFICATIONS

MAIN DECK



LOWER DECK

Version A



LOWER DECK

Version B



LENGTH OVERALL	14,86 m / 48'74" ft
WATER LINE LENGTH	13,40 m / 43'95" ft
BEAM	4,87 m / 15'97" ft
DRAFT	1,05 m / 3'44" ft
APPROX. LIGHT DISPLACEMENT	14.750 kg / 32518 Lbs
APPROX. LOAD DISPLACEMENT	17.550 kg / 38691 Lbs
FUEL CAPACITY	1.500 L / 396 US gal
WATER CAPACITY	430 L / 114 US gal
ENGINES	2 x Volvo Penta D6 IPS 600 320 kW / 435 hp 3500 rpm 2 x Volvo Penta D6 IPS 650 353 kW / 480 hp 3800 rpm
MAX SPEED	27 kn - IPS 600 / 31 kn - IPS 650
CRUISING SPEED	20 kn - IPS 600 / 24 kn - IPS 650
CABINS	1/2
BATHROOMS	1 + 1
MAX PERSONS CAPACITY	12
DESIGN	Brunello Acampora / Victory Design Cav. Norberto Ferretti Solaris Power Design Team

57

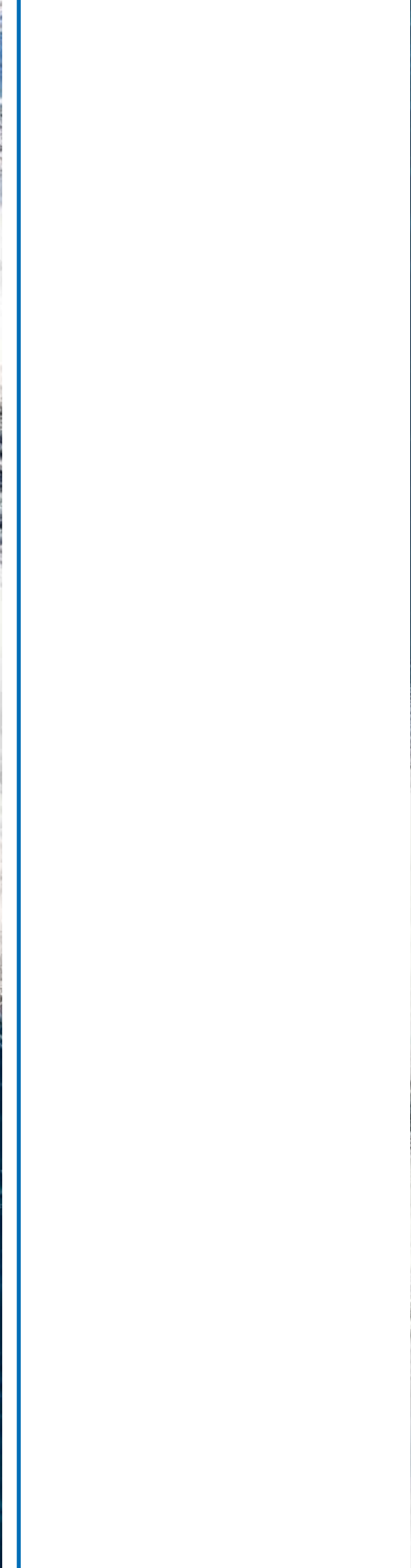
NO BOAT MATCHES
THIS COMBINATION OF
FEATURES

THE ONLY LOBSTER BOAT FEATURING
WALKAROUND DECKS, HELMSMAN'S SIDE
DOOR AND FOLD-OUT BULWARKS.

L
O
B
S
T
E
R

57







57







MAIN DECK

Lower deck galley layout



MAIN DECK

Main deck galley layout



LOWER DECK

Version A



LOWER DECK

Version B



LOWER DECK

Version C



57 LOBSTER

TECHNICAL SPECIFICATIONS

LENGTH OVERALL	17,50 m / 57'40" ft
WATER LINE LENGTH	15,40 m / 50'52" ft
BEAM	5,28 m / 17'32" ft
DRAFT	1,29 m / 4'23" ft
APPROX. LIGHT DISPLACEMENT	23.000 kg / 50706 Lbs
APPROX. LOAD DISPLACEMENT	26.000 kg / 57320 Lbs
FUEL CAPACITY	2.200 L / 581 US gal
WATER CAPACITY	600 L / 159 US gal
ENGINES	2 x Volvo Penta D8 IPS 800 441 kW / 600 hp 3000 rpm 2 x Volvo Penta D11 IPS 950 533 kW / 725 hp 2500 rpm
MAX SPEED	30 kn - IPS 800 / 35 kn - IPS 950
CRUISING SPEED	23 kn - IPS 800 / 26 kn - IPS 950
CABINS	2 / 3 / 4
BATHROOMS	2
MAX PERSONS CAPACITY	12
DESIGN	Brunello Acampora / Victory Design Cav. Norberto Ferretti Solaris Power Design Team

57

SOLARIS POWER
57 FLYBRIDGE

ALL THE CHARACTERISTICS OF THE
57 LOBSTER, PLUS THE FLYBRIDGE
CONFIGURATION.

F
L
Y
B
R
I
D
G
E

57



58

COMING IN 2021

THE NEW WALKAROUND OPEN BOAT THAT
WILL REDEFINE THE STANDARDS OF THE
CATEGORY.

O
P
E
N

58





MAIN DECK



LOWER DECK

Version A



LOWER DECK

Version B



LOWER DECK

Version C



LAYOUT 58 OPEN

70

SEAWORTHINESS,
COMFORT AND A UNIQUE
AND UNMISTAKABLE
DESIGN

DESIGNED FOR LONG RANGE CRUISING
IN ANY SEA CONDITIONS, THANKS TO THE
UNIQUE SOLARIS POWER HULL CONCEPT.

F
L
Y
B
R
I
D
G
E

70

70 FLYBRIDGE

TECHNICAL SPECIFICATIONS

HULL LENGTH	21,45 m / 70'36" ft
WATER LINE LENGTH	19,90 m / 65'27" ft
BEAM	6,93 m / 22'73" ft
DRAFT	1,02 m / 3'35" ft
APPROX. LIGHT DISPLACEMENT	49.000 kg / 107800 Lbs
APPROX. LOAD DISPLACEMENT	57.000 kg / 125400 Lbs
FUEL CAPACITY	4.500 L / 1188 US gal
WATER CAPACITY	1.000 L / 264 US gal
ENGINES	2 x MAN CR V12 1.029 kW / 1.400 hp
MAX SPEED	up to 32 kn
CRUISING SPEED	up to 26 kn
MAX PERSONS CAPACITY	16
DESIGN	Brunello Acampora / Victory Design Solaris Power Design Team



AGENTS AND DISTRIBUTORS

SOLARISPOWER HEADQUARTER

Via Antonio Masetti 30 - Forlì (FC) - Italy
T. +39 0543 807062 - info@solarispower.it
www.solarispower.com



AUSTRIA

Eva and Roman Mayrhofer
T. +43 664 10 100 99
E. eva.mayrhofer@mayer-yachten.com

BALEARIC ISLANDS

PALMA DE MALLORCA
Yacht Center Palma S.L.
Beatrice Lafaille
T. +34 971 71 56 12
M. +34 619 212 261
solaris@ycp.com.es

CROATIA

TRIBUNJ

Merk & Merk Jahte Servis Tribunj
Julian Merk
M. +385 99 709 44 55
E. office@merkandmerk.hr

FRANCE

ANTIBES

Lb Yachting
Lucile Mallard
T. +33 (0)4 92 90 33 95
M. + 33 6 11 55 96 38
E. lucile@lb-yachting.com

SAINT TROPEZ

Mercurio Yachts
Adrien Follin
M. +33 6 49 56 14 54
E. adrien@mercurio.fr

GERMANY

Ben Vaes
M. +49 (0)172 919 2533
T. +44 (0)7740 10 25 58
E. bv@sycustom.com

GREECE

ATHENS

Fastsailing Yacht Management
Michalis Aftias
T. +30 6977 2345 27
E. m.aftias@fastsailing.gr

ISRAEL

HERZLIYA

Golan Levi
T. +972543000933
M. +442081330733
E. golan@swellyachting.com

ITALY

FORLÌ

Solaris Power
Jean Pierre Mari
T. +39 0543 807062
M. +39 339 6747383
E. jp.mari@solarispower.it

LAVAGNA

Corte Srl
Rodolfo Caprari
M. + 39 335 5433698
E. rudycaprari@cortesrl.it

NAPOLI

Bay Yacht
Francesco del Tufo
M. +39 334 3108322
E. francescodeltufo@bayacht.it

RUSSIA

MOSCOW

Premium Yachts
Dmitriy Osankin
T. +7 (495) 741-00-03
M. +7 (915) 391-29-99
E. sales@premiumyachts.ru

SPAIN

TEULADA (ALICANTE)

Nautica Mengual
Gonzalo Mengual
T. +34 965741211 (Ext. 106)
M. +34 630101044
E. sales@nauticamengual.com

SWITZERLAND

AUSTRIA

GERMANY

LICHTENSTEIN

Paolo Buonvicini
T. +41 91 641 71 02
M. +41 79 447 64 25
E. pb@sycustom.com

UNITED KINGDOM

LYMINGTON, HAMPSHIRE

Berthon International
Hugh Reyner
T. +44 (0) 1590 679222
M. +44 (0) 7920 465455
E. hugh.reyner@berthon.co.uk

DISCLAIMER AND COPYRIGHTS

Solaris Power Yachts reserves the right to change descriptions, modify, or substitute products in this catalogue without notice. Solaris is a registered trademark of Solaris

Yachts Srl, other names may be registered trademarks of their respective owners. Solaris Power © 2020. All rights reserved.

Rendering and illustrations: Victory Design
Photo: C. Borlenghi, A. Muscatello
Graphic design: DL&A Agency

