

LOBSTER 55 HARD-TOP & FLY

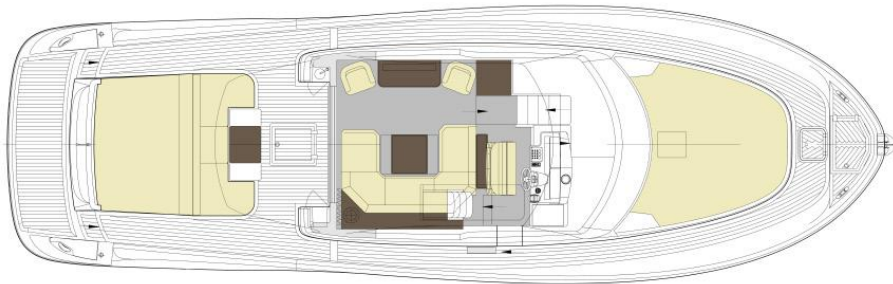
DECKSLAYOUTS



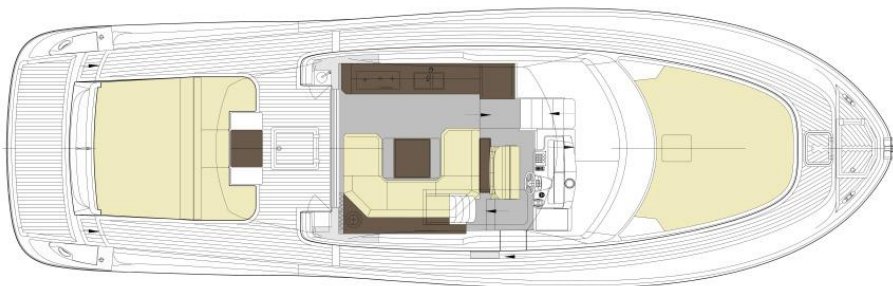
Solaris Power 55 LOBSTER

Deck Layout

Main deck (lower deck kitchen)



Main deck (upper deck kitchen)



Cabin Version
A cabin version (lower deck kitchen)



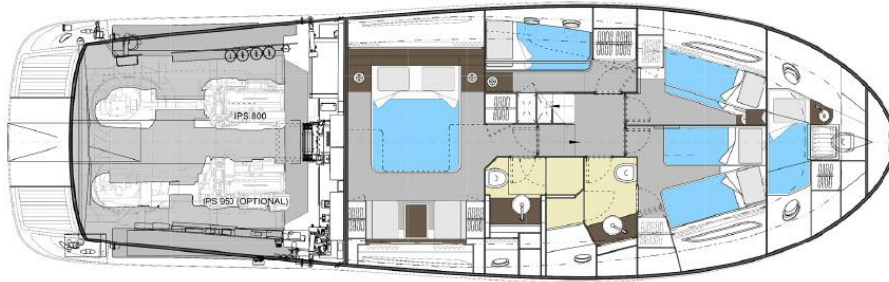
B cabin version (lower deck kitchen)



C cabin version (main deck kitchen)



D cabin version (main deck kitchen)



E cabin version (main deck kitchen)

TECHNICAL SPECIFICATIONS

Description Data

Length overall: 17,15 m

Hull length: 16,75 m

Water line length: 15,40 m

Beam: 5,28 m

Draft: 0,745 m

Approx. unladen displacement: 23.000 kg

Approx. laden displacement: 26.000 kg

Fuel capacity: 2.200 l

Water capacity: 600 l

Engines: 2 x Volvo Penta D8 IPS 800

441 kW / 600 hp 3000 rpm 2 x Volvo Penta D11 IPS 950

533 kW / 725hp 2500 rpm

Max speed: 30 Kn 35 Kn

Cruise speed: 23 Kn 26 Kn

Cabins:2/3/4

Bathrooms: 2

Capacity: 12 Persons

Design: Brunello Acampora - Victory Design / Norberto Ferretti / Solaris Power Design Team

Solaris Power reserves the right to change specifications without notice.

STANDARD EQUIPMENT

COMMON TO ALL VERSIONS

Hull and Deck

- Stainless steel deck equipment
- Electric winch 2000 W windlass with telescopic hawse and remote control
- Galvanized delta anchor kg. 32 and 75mt 10mm chain
- Electric winch 2000 W windlass
- Teak bridge and stern platform
- Platform bathing ladder extractable made by stainless steel and teak
- Hydraulic gangway
- Solid teak gunwale
- Closing cockpit stays
- Bow and stern sun bathing matrasses
- Frontal and lateral deckhouse crystal glued windows
- Acoustic alarm for water in stern and bow bilges
- Midboat bollards (1 each side)
- Fenders plugs
- Antifouling paint
- Stern steps courtesy lights
- Fire extinguisher
- Zinc anodes

Lounge

- Stern stainless steel 3 panels sliding door
- Dinette with fabric "U" sofa and extendable table
- Furniture with shelf and kitchen cabinet
- Light walnut essenza furniture
- Light walnut wood floor
- Two chairs next to the TV cabinet (lower deck kitchen version)
- Radio stereo with Fusion MS-IP700 speakers
- Sides curtains
- Led lights
- Vinyl panels ceiling
- Fixed 32" TV mount
- Courtesy lights in stair

Helm Console

- Control station with complete instrumentation
- Two seats pilot chair
- Throttle lever - electric inverter with Joystick
- 12" Volvo Penta navigation display
- Volvo Penta auto pilot
- Rudder indicator
- Echo sounder, log milometer and water temperature relevator with tridata DST 800 system
- Fuel and water indicator
- VHF Garmin 210i con DSC system
- Compass

- 1/2 miles headlight
- Windscreen wipers with windscreen washer included
- Light walnut wood floor
- Fire extinguisher

Cockpit

- Lifejacket peak with line and light buoy
- Speakers
- Seabob and tender garage with hydraulic door
- Mooring covers
- Cockpit fresh water sink

Owner's cabin

- Two wardrobes
- Sides windows with two openable portlights
- Reading lights
- Double bed with mattress
- Led lights
- Sides high cabinets
- Moquette floor
- Two seats and table under starboard portlight
- Vinyl covered ceiling
- Mirror
- Curtains

Guest's cabin

- Bathroom access
- Sides wardrobes with glove compartments (left and right)
- Two wardrobes
- Bed with storage base
- Bedside tables
- Sides windows with two openable portlights
- Two reading lights
- Double bed with mattress
- Led lights
- Fabric headboard
- Vinyl covered ceiling
- Moquette floor
- Mirror
- Curtains

Guest's bathroom and day

- Bathroom accessories
- Wardrobes and shelves
- Detached shower with crystal door
- Glass washbasin
- Led lights
- Openable portlight inside the shower cabin
- Two doors in the corridor and one in the bow cabin
- Mirror
- Pleated curtain

- Ceramic electric WC with control panel 3/4 full

Propulsion system and engine room

- VOLVO PENTA IPS 800 (441 Kw / 600 Hp) engines with manual interceptor system
- Electronic blowers (nr. 2)
- Volvo toolbox
- Hatch and stainless steel ladder
- Boiler 220V 60 lt.
- Automatic/manual fire extinguisher 12 kg.
- Fuel filters water separator
- Generator peak
- Inspection lights
- Bow watertight bulkhead
- Gasoline tank
- Diverter valve for emergency bilge output

Bow locker

- Chain peak
- Two 25mt mooring lines
- Winch remote control
- Inspection hatch
- Fresh water shower for chain washing
- Stainless steel bar for fenders

Unmounted crew cabin

- Bow cabin portlight
- Access ladder
- Planking
- N. 2 storage shelves

Systems

- Joystick docking assistance
- Remote control for engines power shut-off
- Fire extinguisher (one in each cabin)
- Electric equipment composed by: Kohler generator 9000W - generator battery 60Ah 12V - engines battery set 180Ah 24V - auxiliary services battery set 210Ah 12V - battery charge 50Ah 24V - 24V illumination in cabins - Battery cut off switch - Black water output system with automatic electro pump and 77 liter tank
- Bilges output system with 4 electro pumps (3 automatics)
- Fresh water pump
- VHF transceiver system
- Lounge and lower deck entrance air conditioning system
- Lounge and cockpit stereo system Fusion MS-IP700
- Electric WC system with fresh water and black water tank
- 50Ah quay plugs
- Cathodic protection with zinc anodes
- Grey water output system with electro pump and two 120 liter tanks. Tot. 240 lt

General Equipments

- 220 V quay cable
- 8 people Oceanus liferaft
- Dishes for 8 people

- Fenders n. 6

STANDARD EQUIPMENT FOR ALL SUNTOP VERSIONS

- Radar, signals and antenna mast
- Flag pole
- Acoustic alarm
- Navigation lights
- Sliding motorised roof

STANDARD EQUIPMENT FOR ALL FLYBRIDGE VERSIONS

- Radar, signals and antenna mast
- Flag pole
- Acoustic alarm
- Exit hatch from the salon
- Navigation panel control
- Autopilot
- Instrumental panel with engines display
- Electronic control lever with Joystick
- Navigation lights
- 12" navigator display
- Windscreen protection
- Sunbathing
- Stainless steel pulpits VHF repeater
- Driver seat for two people

STANDARD EQUIPMENT FOR ALL LOWER DECK GALLEY VERSIONS

- Miele 4 burners induction cooktop
- Corian worktop
- Miele electric oven 60 cm
- Miele fridge and freezer lt. 280 + 60
- Double stainless steel basin
- Cooker hood over the cooktop
- 220V plugs
- Led lights
- Cabinets
- Understair galley
- Drawer and cabinet
- Cutlery drawer
- Extinguisher
- Portlights nr. 2
- Vinyl covered ceiling

STANDARD EQUIPMENT FOR ALL MAIN DECK GALLEY VERSIONS

- Four burners induction cooktop
- Corian worktop
- 90lt Vitrifrigo fridge
- Foster electric oven
- Stainless steel basin n. 1
- Extinguisher

STANDARD EQUIPMENT (A) VERSION LOWER DECK GALLEY

- Owner's cabin (see standard equipment)
- Guest's cabin (see standard equipment)
- Owner's bathroom (see standard equipment)
- Guest's bathroom and day (see standard equipment)

STANDARD EQUIPMENT (B) VERSION LOWER DECK GALLEY

- Owner's cabin (see standard equipment)
- Guest's cabin
- Wardrobe
- Two bunk bed cabin with mattresses
- Two "V" low beds with mattresses
- Bedside tables
- Led lights
- One portlight each cabin
- Owner's bathroom (see standard equipment)
- Guest's bathroom and day (see standard equipment)

STANDARD EQUIPMENT (C) VERSION MAIN DECK GALLEY

- Dinette lower deck
- Owner's (see standard equipment)
- Bow double cabin (see standard equipment)
- Owner's bathroom (see standard equipment)
- Guest bathroom and day (see standard equipment)

STANDARD EQUIPMENT (D) VERSION MAIN DECK GALLEY

- Owner's cabin (see standard equipment)
- Bow double room (see standard equipment)
- Two "L" beds cabin
- Owner's bathroom (see standard equipment)
- Guest bathroom and day (see standard equipment)

STANDARD EQUIPMENT (E) VERSION MAIN DECK GALLEY

- Owner's cabin (see standard equipment)
- Two beds bow cabin
- Two bunk beds bow cabin
- Two single or one double bed in bow cabin
- Owner's bathroom (see standard equipment)
- Guest's bathroom and day (see standard equipment)