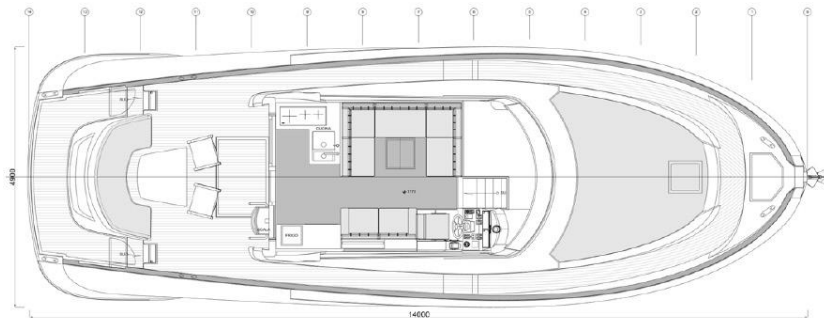


LOBSTER 48 HARD-TOP & FLY

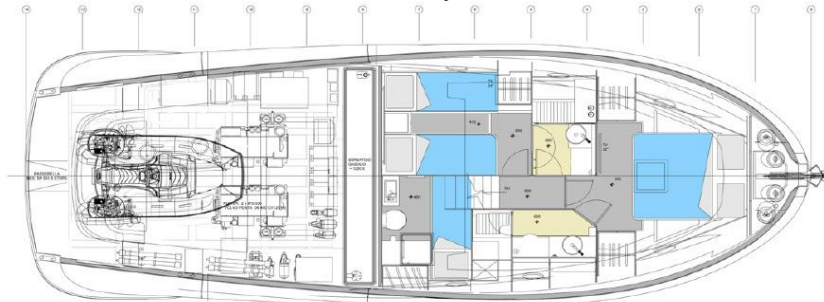
DECKSLAYOUTS



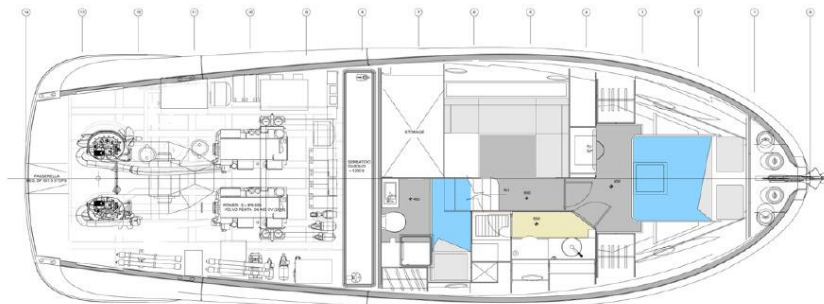
Solaris Power 48 LOBSTER



Deck Layout



A Cabin Version



B Cabin Version

TECHNICAL SPECIFICATIONS

Description Data

Length overall: 14,35 m

Hull length: 14,03 m

Water line length: 13,40 m

Beam: 4,87 m

Draft: 0,75 m

Approx. unladen displacement: 14.000 kg (OPEN) - 14.750 kg (LOBSTER)

Approx. laden displacement: 16.800 kg (OPEN) - 17.550 kg (LOBSTER)

Fuel capacity: 1.500 L

Water capacity: 430 L

Engines: 2 x Volvo Penta D6 IPS 600

320 kW / 435 hp 3500 rpm 2 x Volvo Penta D6 IPS 650

353 kW / 480 hp 3800 rpm

Max speed: 30 Kn 35 Kn

Cruise speed: 23 Kn 26 Kn

Cabins:1/2

Bathrooms: 2

Capacity: 12 Persons

Design: Brunello Acampora - Victory Design / Norberto Ferretti / Solaris Power Design Team

Solaris Power reserves the right to change specifications without notice.

STANDARD EQUIPMENT

Hull and Deck

- Stainless steel deck equipment
- Electric winch 1500 W windlass with telescopic hawse and remote control
- Galvanized delta anchor kg. 20 and 50mt 8mm chain
- Teak stern platform
- Platform bathing ladder extractable made by stainless steel and teak
- Hydraulic gangway

- Solid teak gunwale
- Stern stainless steel gateway
- Bow sun bathing mattresses and stern seats in Silvertex fabric
- Sliding crystal door for cabins access
- Acoustic alarm for water in stern and bow bilges

- Midboat bollards (1 each side)
- Fenders plugs
- Antifouling paint
- Stern steps courtesy lights
- Zinc anodes

Maindeck Hall

- Dinette with fabric “U” sofa and extendable table
- Two seats sofa
- Light walnut essenza furniture
- Sides curtains

- Led lights
- Vinyl panels ceiling
- Stowage peak access from the sofa

Dashboard

- Control station with complete instrumentation
- Pilot seat
- Throttle lever - electric inverter with Joystick
- 12” Volvo Penta navigation display

- Volvo Penta auto pilot
- Rudder indicator
- Echo sounder, log milometer and water temperature relevalor with tridata DST 800 system
- Fuel and water indicator

- VHF Garmin 210i con DSC system
- Compass

Cockpit

- Mooring covers

- Outdoor table

Owner's cabin

- Two wardrobes
- Sides windows with two openable portlights
- Reading lights
- Double bed with mattress

- Led lights
- Beauty table and seat (only for one cabin version)
- Moquette floor

- Vinyl covered ceiling
- Mirror
- Curtains

Owner's bathroom

- Bathroom accessories
- Wardrobe and shelves
- Detached shower with crystal door

- Glass washbasin
- Led lights
- Openable portlight (1)
- Mirror

- Pleated curtain
- Ceramic electric WC and control panel 3/4 full

Lower deck dinette (only for one cabin version)

- Sides windows with one openable portlight
- Fabric L sofa
- Stowage peaks under the seats

- Low cabinet
- Cabinet with shelves
- Pleated curtain
- Moquette floor

Guest's cabin (only for two cabins version)

- Bathroom access
- One side wardrobe with glove compartments
- One bedside table

- Window with openable portlight
- Two reading lights
- Two single beds with mattresses
- Led lights

- Fabric headboard
- Vinyl covered ceiling
- Curtains

Guest's bathroom and day (Only for two cabins version)

- Bathroom accessories
- Wardrobes and shelves
- Detached shower with crystal door

- Glass washbasin
- Led lights
- Openable portlight inside the shower cabin
- Two doors in the corridor and in the guest's cabin

- Mirror
- Pleated curtain
- Ceramic electric WC with control panel 3/4 full

Propulsion system and engine room

- VOLVO PENTA IPS 600 (320 Kw / 435 Hp) engines with manual interceptor system
- Electronic blowers (nr. 2)
- Volvo toolbox
- Hatch and stainless steel ladder

- Boiler 220V 25 lt.
- Automatic/manual fire extinguisher 12 kg.
- Fuel filters water separator

- Inspection lights
- Bow watertight bulkhead
- Stainless steel gasoline tank 1500lt

Bow peak

- Chain peak
- Two 25mt mooring lines

- Winch remote control
- Inspection hatch

- Fresh water shower for chain washing

Unmounted crew cabin

- Deck access portlight
- Stowage peak access portlight

- Access ladder
- Planking

- N. 2 storage shelves

Systems

- Joystick docking assistance
- Remote control for engines power shut-off
- Fire extinguisher (one in each cabin)
- Electric equipment composed by: Kohler generator 7000W - generator battery 60Ah 12V - engines battery set 180Ah 24V - auxiliary services battery set 210Ah 12V - battery charge 50Ah 24V - 24V illumination in cabins - Battery cut off switch

- Bilges output system with 3 pumps (2 two of them automatics)
- Fresh water pump
- VHF transceiver system
- Stabilising manual interceptor system
- Electric WC system with fresh water and 75lt black water tank

- 23Ah quay plugs
- Cathodic protection with zinc anodes
- Grey water output system with electropump and two tanks 115+70 lt. Tot. 240 lt
- Stainless steel fresh water tank 430lt

Equipments

- 220 V quay cable

- Fendresses n. 6

Hard Top

- Mast with radar predisposition segnals and antenna
- Flag pole

- Acoustic alarm

- Navigation lights

Maindeck Kitchen

- Four burners induction cooktop
- Worktop
- Popup sink

- Dustbin
- Franke oven
- Stainless steel basin n. 1

- 220V plugs
- Led lights
- Drawer and closets
- Dishes for 6 people