



SOLARIS 42#2014 Windspiel



Year:	2014
Located in:	Croatia
Flag:	Austria
Current Price:	€ 415.000,- (VAT paid)

Privately owned yacht, 3rd overall during the Solaris Cup. This 42 combines the best of sailing performance and family cruising. This is a rare 3-cabin version with 2 bathrooms and a brushed oak interior. Teak decks, electric winch, bow thruster, heating, electric toilet, Raymarine full electronics with radar and AIS. Comes with dinghy and liferaft.



SPECS, EQUIPMENT AND INFORMATION

GENERAL

YARD	Solaris Yachts / Cantiere Se.Ri.Gi
DESIGNER	Soto Acebal
HULL MATERIAL	GRP vacuum infusion
TYPE OF YACHT	Cruiser Racer
CERTIFICATION - CERINA	Ocean A

DIMENSIONS

LOA	12.34 m
BEAM	3.98 m
DRAFT	2.50 m
DRY WEIGHT	8.800 kg

RIG

SPARCRAFT	White painted & performance mast
-----------	----------------------------------

SAILS

MAIN SAIL FULLY BATTEN 55m ² ; 2 reff ; 5 batten; Rostan System; Lasybag;	ONE SAIL 2014
GENOA furling ; 40m ² 4T Forte Cruising Mebran, batten; Persening;	ONE SAIL 2014
Gennaker; Performance GFR, 95m ² ; Karvar endless furling;	ONE SAIL 2014
GENOA furling, 44m ² 4T Forte 110 Cruising Mebran Twaronfaser ,	ONE SAIL 2017

ENGINES

VOLVO PENTA	40 HP
TYPE	Diesel
DRIVE	Saildrive
PROPELLER	Folding GORI PROP (Overdrive Function)
ENGINE HOURS	1.100

TANKS

FRESH WATER	400 L
FUEL	200 L
HOLDING TANKS	40 L



ACCOMODATIONS

FIT OUT	White Oak brushed
CABINS	3; 1 Owner cabin, 2 Guest cabins
BERTH	Sleeps 6 excl. saloon all mattresses are 18cm high top maritime quality
GALLEY	2 fridges; 3 Burner cooker and oven, Gas ; stainless steel Worktops in Corian 2 stainless steel sinks 1 extra working board to pull out
HEADS	2; 1 with separate shower
TOILETS	2; 1 x electric Tecma; 1 x standard
SALOON	Navigation Table in front;

HULL AND DECK

Full teak deck
White painted
Cockpit table in teak
Sprayhood
Bimini Top
Hydraulic stern platform
Gennaker deck gear
1 electric Harken halyard winch in cockpit
5 Harken winches in cockpit

ELECTRICAL INSTALLATION

Inverter 24V/2500 W
1 Service-Batterie AGM 115 A/h; 1 Engine-Batterie
Mastervolt Charger 24V/ 100 A

ELECTRONICS AND NAVIGATION

Ray Marine Multifunction Instruments i70
Multifunktion-Display E95 inkl. GPS Antenne and NAVIONIX Sea Card Europe
Ray Marine Autopilot P70 mit SPX10
Ray Marine Random Radar RD 418D, installed on the mast
Ray Marine VHF 55 incl. Handheld for Cockpit
Ray Marine AIS SENDER & RECIVER
Ray Marine i70 Displays - 3 in cockpit an 1 at the nav-table in the salon
Furuno NAVTEX Receiver NX 300 (paperless)
WLAN Router - Locomarine incl. UPS antenna & W-Lan Shore antenna

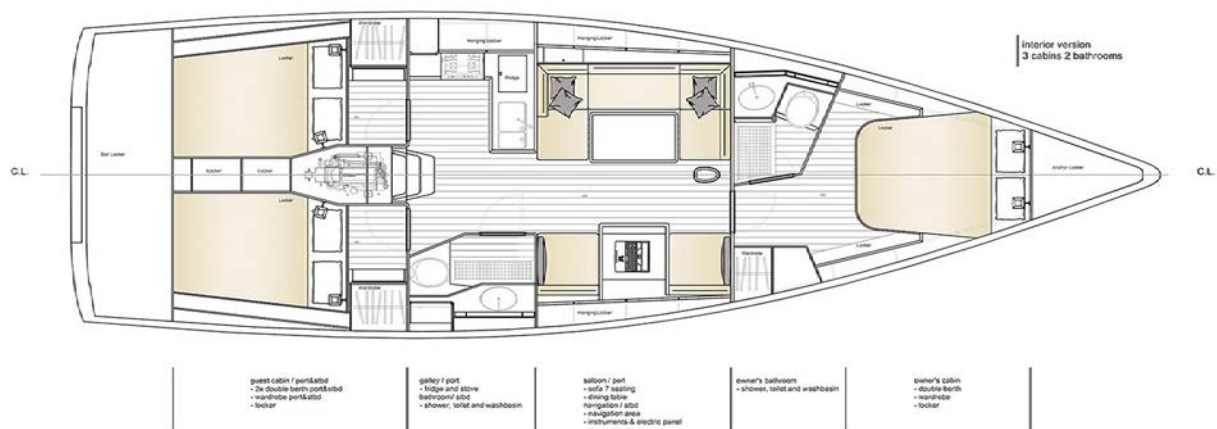


ADDITIONAL EQUIPMENT

Bow thruster; MAX Power CR70 12 Volt, Compact Retract;
Electric 1000 watt anchor windlass
20 kg Dealta anchor 80m/10mm chain
WEBASTO Heating 5000ST; 5 outlets
2 additional hull-windows in the owner compartment
5 flush hatches from Solimar incl. shading & mosquito roller 2 hatches incl. shading & mosquito roller
6 retractable cleats
Dinghy 2m Allmarine Yamaha 8HP
External Outside VHF Handheld;
an extra outside anchor-winch switch (next to steering wheel)
Cockpit LED Light in the boom
Cover for: steering wheels, Cockpit-Table, Nav-Plotter; Bimini and Sprayhood
Winter cover

SAFTEY

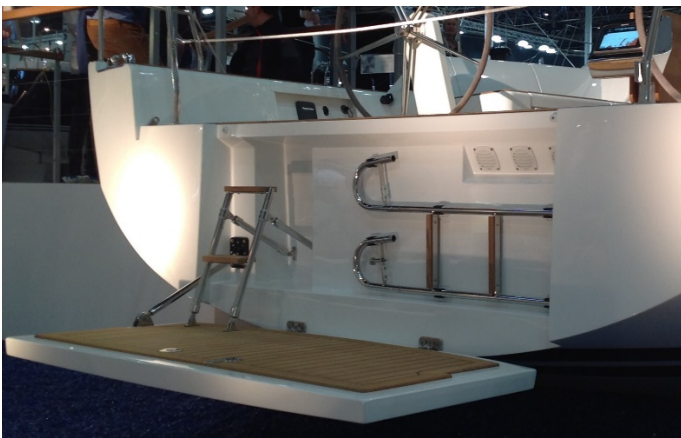
Safety + mooring equipment's & LED Navigation lights
8 Person Liferaft
5 Fire extinguisher



solaris 42 / interior layout









DISCLAIMER:

All data considered correct but not guaranteed. This document is not contractual. The Company offers the details of this vessel in good faith but cannot guarantee or warrant the accuracy of this information nor warrant the condition of the vessel. A buyer should instruct his agents, or his surveyors, to investigate such details as the buyer desires validated. This vessel is offered subject to prior sale, price change, or withdrawal without notice.

SOLARIS YACHTS CUSTOM

BEN VAES

ben.vaes@sycustom.com

Ipswich Haven Marina, New Cut East

Ipswich IP3 0EA England

www.luxury-marine.com

www.solarisyachts.com

[+44 7740 10 25 58](tel:+447740102558)